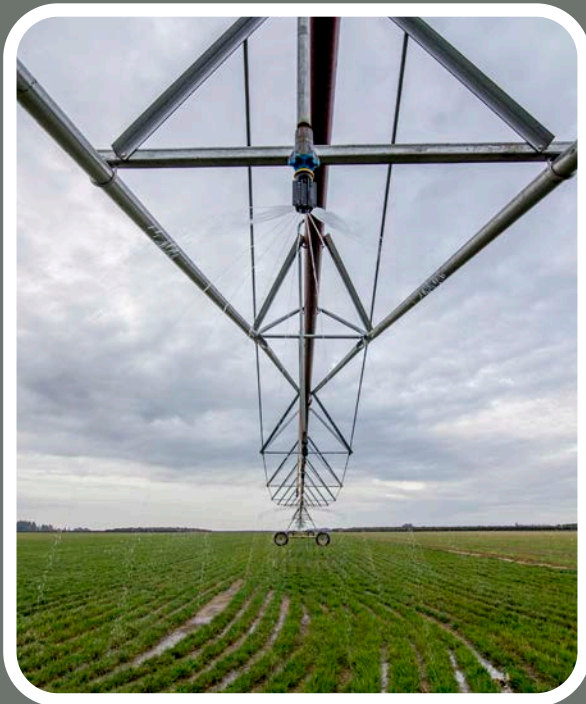


## Get incentives for irrigation system upgrades

With rising energy prices and the increasing need to conserve water, it makes more sense than ever to invest in efficient irrigation equipment. A typical farm can reduce electricity costs for pumping by 35% with variable frequency drives alone, while improvements like converting to drip irrigation or a linear/pivot system save both water and energy.

To make improvements affordable, Energy Trust of Oregon offers rebates and custom incentives. Oregon customers of Portland General Electric and Pacific Power are eligible to participate.



**Energy Trust of Oregon**  
421 SW Oak St., Suite 300  
Portland, Oregon 97204



# REDUCE IRRIGATION ENERGY COSTS

Printed on recycled paper that contains post-consumer waste. 1/20

## Rebates

Cash in on incentives after you purchase the following replacement equipment:

### Linear and pivot improvement rebates

- Low-pressure regulators—\$5 per regulator
- Drop tube or hose extensions for low-pressure sprinklers—\$2.40 per tube
- “Goose neck” elbow for drop tubes—\$1.65 per elbow
- Rotating-type sprinklers that replace impact sprinklers—\$4 per sprinkler
- Multi-trajectory sprays that replace worn low-pressure sprinklers—\$1 per sprinkler
- Multi-trajectory sprays that replace impact sprinklers—\$4 per sprinkler
- Multiple configuration nozzles—\$2.75 per sprinkler

### Wheel and hand-line improvement rebates

- Rebuilt or new impact sprinklers to replace worn sprinklers on existing systems—\$3.75 per sprinkler
- New nozzle for impact sprinkler that replaces existing worn nozzle—\$0.75 per nozzle
- Flow controlling nozzle for impact sprinklers—\$3.75 per nozzle
- Drains for wheel-lines, hand-lines, main-lines, and linear or pivot systems—\$1 per drain
- Gasket for wheel-lines, hand-lines or portable main-lines—\$2 per gasket
- Cut and pipe press repair of leaking hand-lines, wheel-lines and portable main-lines—\$10 per section
- Rotating-type sprinklers that replace impact sprinklers—\$4 per sprinkler

## Calculated incentives

Calculated incentives are based on estimated annual energy savings. We offer \$0.30 per kilowatt hour saved, up to 70% of the project's installed costs.

- Variable frequency drive (VFD) —added to new or existing pump
- Drip irrigation system conversion
- Linear/center pivot system conversion

### Convert your linear or pivot to a MESA, LESA, LEPA or PMDI irrigation system

**Mid Elevation Spray Application (MESA)** systems use sprinklers that operate within 5-10 feet of the ground. Incentives only apply to existing high pressure systems.

**Low Elevation Spray Application (LESA)** systems use sprinklers that operate within one foot of the ground.

**Low Energy Precision Application (LEPA)** systems use sprinklers or bubblers that operate at the ground level.

**Precision Mobile Drip Irrigation (PMDI)** systems take it a step further and use ground-level drip tubing attached to the end of the drop tubes.

- Upgrade for systems with VFD \$35 per sprinkler drop
- Upgrade for systems without VFD \$15 per sprinkler drop

### Scientific Irrigation Scheduling

#### Incentives are available

Scientific Irrigation Scheduling is a method used to optimize crop irrigation. It entails making irrigation decisions based on input from soil moisture monitors, weather station data, and evapotranspiration data. An experienced vendor will provide software tools and assist the grower in analyzing the available data to make the best irrigation decisions for that crop.



## UPGRADE TODAY

Contact your Energy Trust approved irrigation vendor for more information on rebates and custom incentives. Your vendor can help you identify the most cost-effective improvements and apply for cash incentives.

For a complete list of approved vendors, or to download the Premium Irrigation Incentive Application (Form 420IR) required for rebates, visit [www.energytrust.org/ag](http://www.energytrust.org/ag) or call **503.928.3154**.

*Energy Trust of Oregon is an independent nonprofit organization dedicated to helping utility customers benefit from saving energy and generating renewable energy. Our services, cash incentives and energy solutions have helped participating customers of Portland General Electric, Pacific Power, NW Natural, Cascade Natural Gas and Avista save on energy costs. Our work helps keep energy costs as low as possible, creates jobs and builds a sustainable energy future.*

*Energy Trust provides technical assistance and financial incentives for energy systems or equipment that meet its program criteria, but does not install energy systems or equipment nor does it guarantee any specific energy savings through its assistance or programs. Installation work is done by independent businesses that are solely responsible for the quality and performance of their installations.*